

**Grammar**

**1 Circle the correct word.**

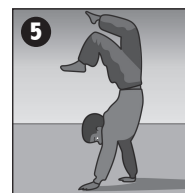
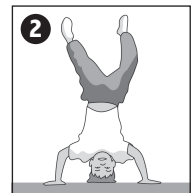
- 1 A What are *her / your / his* names?  
B *Their / Your / Our* names are Oliver and Alice.
- 2 This is my brother. *Our / His / Her* name's James.
- 3 A I've got two hamsters.  
B What are *their / my / your* names?
- 4 Can you walk on *our / your / my* hands?
- 5 I can stand on *their / my / our* head.
- 6 She's our new teacher.  
*Your / His / Her* name is Clare.

**2 Complete with *my, your, his, her, its, our* or *their*.**

- 1 What's in ..... bag, Tom? – A frog.
- 2 Sue is in class 8B and ..... sister is in 9A.
- 3 Brad is in class 7A and ..... brother is in 9C.
- 4 Look at William and James! ..... hair is blue.
- 5 What's the matter with Nicole? ..... eyes are red.
- 6 Are you sad? – Yes, I can't find ..... cat.
- 7 What day is the best for you, Alex and Jasmine? – ..... best day is Saturday.
- 8 I've got a new frog. .... name is Hopalong.
- 9 Daniel and Ryan are brothers. .... cat is called Buddy.

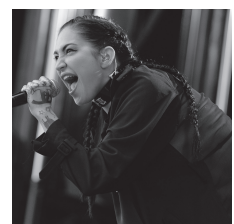
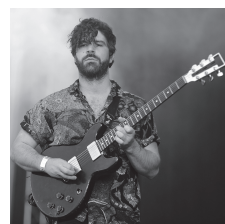
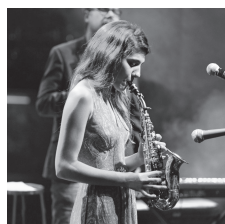
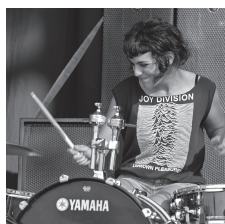
**3 Look at the pictures and answer the questions.**

- 1 Can Connor climb the tree?  
.....
- 2 Can Ravi stand on his head?  
.....
- 3 Can Grace touch her nose with her tongue?  
.....
- 4 Can Amy write with her left hand?  
.....
- 5 Can Jamie walk on his hands?  
.....
- 6 Can Ella wiggle her ears?  
.....



**Vocabulary**

**4 Write the words under the pictures.**

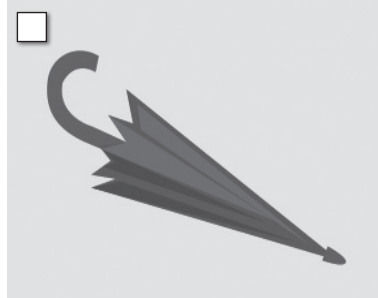


- 1 .....
- 2 .....
- 3 .....
- 4 .....
- 5 .....

**Reading**

**1 Match the sentences with the pictures. Write numbers.**

- 1 The man bumps into a tree.
- 2 Let's go into the woods.
- 3 Groans leaves his office.
- 4 It's my umbrella!
- 5 The man falls into the river.
- 6 There's the bridge.
- 7 He falls out of a tree.
- 8 Let's look for snakes!



**Grammar**

**2 Choose the correct answer.**

- 1 My brother *like* / *likes* dogs.
- 2 We *play* / *plays* football.
- 3 Sally *go* / *goes* to school by bus.
- 4 My dad *work* / *works* in an office.
- 5 I *do* / *does* my homework every day.
- 6 Elephants *eat* / *eats* grass.
- 7 My teacher *give* / *gives* us a test.
- 8 My cat *climb* / *climbs* trees.

**3 Fill in *lot* or *lots*.**

- 1 You've got a ..... of books!
- 2 There are ..... of students in my class.
- 3 Have you got a ..... of homework today?
- 4 I play a ..... of different sports.
- 5 ..... of people like books about Sherlock Holmes.
- 6 Mary hasn't got a ..... of CDs.

**Vocabulary**

**4 Complete the story with the words in the box.**

looks for	climbs	climbs	falls out	goes to	look for
leaves	bumps into	goes	leaves	pull	<del>find</del>

Sherlock Groans has got a sister, Sylvia Groans. She can't <sup>1</sup>..... **find**..... her cat Dibbles. She <sup>2</sup>..... the house at seven o'clock to <sup>3</sup>..... the cat. "Where are you, Dibbles?" thinks Sylvia. Sylvia <sup>4</sup>..... the park. She <sup>5</sup>..... Dibbles under the trees. No, he isn't there. Sylvia <sup>6</sup>..... a tree. She isn't happy. Then ... "Miaow, miaow." Dibbles is in the tree. Sylvia <sup>7</sup>..... the tree. Oh no ... she <sup>8</sup>..... of the tree! Dibbles <sup>9</sup>..... down the tree and finds Sylvia under the tree. Dibbles isn't strong. He can't <sup>10</sup>..... Sylvia home. So, Dibbles <sup>11</sup>..... the park and <sup>12</sup>..... home!

**Dialogue**

**5 Put the dialogue in the correct order.**

- Groans** Hello, Lady Green.
- Groans** Don't worry, Lady Green. I can find Sugar.
- Groans** What's your dog's name?
- Groans** Hello. Sherlock Groans. The world's best detective.
- Lady Green** Hello. This is Lady Green.
- Lady Green** Can you? Great! Thanks, Sherlock. Bye.
- Lady Green** Her name's Sugar.
- Lady Green** Please help me, Sherlock. I can't find my dog.

**Reading**

**1 Read the text and answer the questions.**

Ted Baker works in an office. He has got a desk with a computer and a phone on it. His dog, Nose, sleeps under his desk. Ted Baker has got a very important\* job, and Nose helps him. He is a detective! He is very clever. People phone him because they have got problems. He helps them. Is your stuff lost? Perhaps you can't find your computer. He can find it! Is your dog lost? You can't find your dog? Detective Baker looks for lost pets. He's good at it. He looks in every room. He finds lost dogs and cats under the bed or behind the door. Have you got a problem? Detective Baker and his dog can solve it!

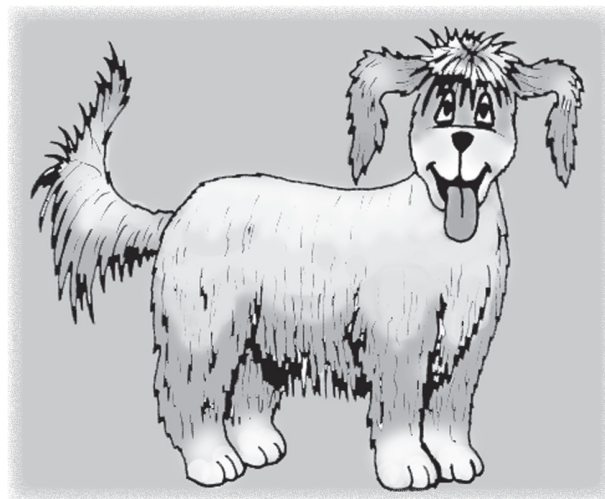
**VOCABULARY:** \*important – wichtig

- 1 Where does Ted Baker work? .....
- 2 What has he got on his desk? .....
- 3 What is under the desk? .....
- 4 What is Ted Baker's job? .....
- 5 Why do people phone him? .....
- 6 Where does he find lost pets? .....

**Grammar**

**2 Circle the correct words.**

Fluff the dog <sup>1</sup> *live / (lives) / he lives* in a small house with Mr and Mrs Winterbottom. In the morning, Fluff the dog <sup>2</sup> *leaves / leave / to leave* his house and he <sup>3</sup> *goes / go / goes for a walk\**. He <sup>4</sup> *to go / goes / go* to the park and <sup>5</sup> *meets / to meet / meet* his friends there. They <sup>6</sup> *plays / play it / play* at the park. Fluff <sup>7</sup> *play / to play / plays* football. He's a very good football player – for a dog. Then Fluff <sup>8</sup> *leaves / leave / leaves is* the park and <sup>9</sup> *goes / go / it goes* to the woods. He <sup>10</sup> *to look / looks / look* for rabbits. There are <sup>11</sup> *a lot / lots of / lot* rabbits in the woods, but they <sup>12</sup> *to know / know / knows* Fluff is there so they <sup>13</sup> *run / to run / runs* the other way\*. Then Fluff <sup>14</sup> *walk / walks it / walks* back home to Mr and Mrs Winterbottom and has his breakfast.

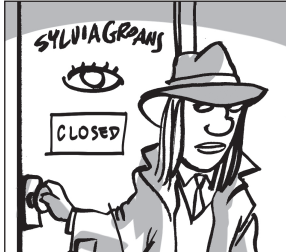


**VOCABULARY:** \*go for a walk – einen Spaziergang machen; the other way – in die andere Richtung

**Vocabulary**

**3 Write the words.**

go to the park    pull her home    bump her head    fall out of the tree  
 climb a tree    look for the dog    find the detective    ~~leave the office~~



1 leave the office



2 .....



3 .....



4 .....



5 .....



6 .....



7 .....



8 .....

**Dialogue**

**4 Write the answers in the correct places.**

She watches people all the time.  
 Yes, she is in books by Agatha Christie.  
 Yes, she is. She always finds the killer.  
 She's a little old lady called Miss Marple.  
 In a small town in the English countryside.

- A Who is your favourite detective?
- B 1 .....
- A Is she in a book?
- B 2 .....
- A Where does she live?
- B 3 .....
- A How does she solve problems?
- B 4 .....
- A Is she clever?
- B 5 .....